



GMT MONTHLY MEMBERSHIP PROGRESS REPORT

Results as of: 5/31/2020

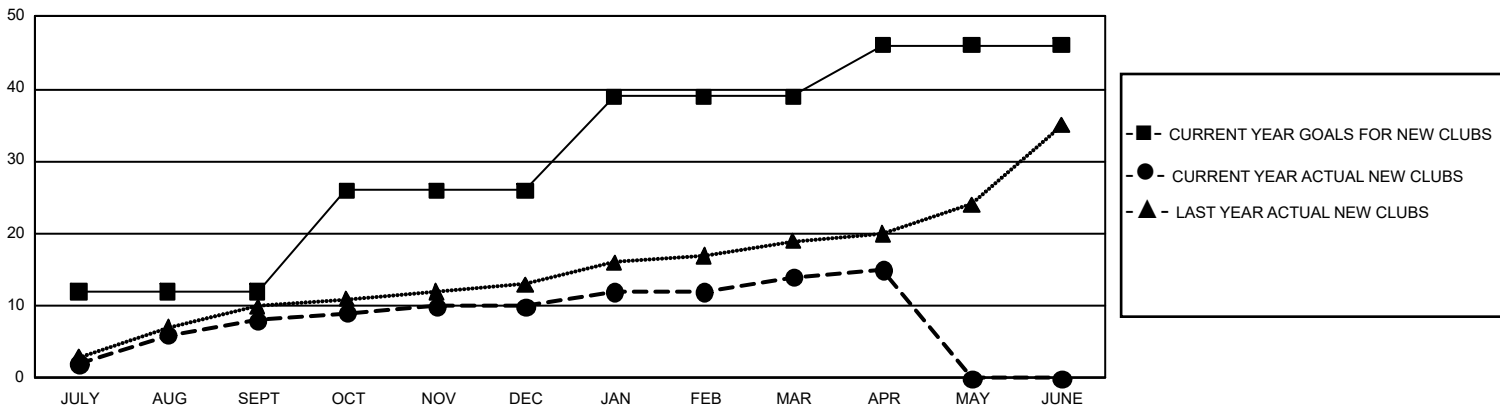
GMT Constitutional Area 3, Group C

GMT: OPEN

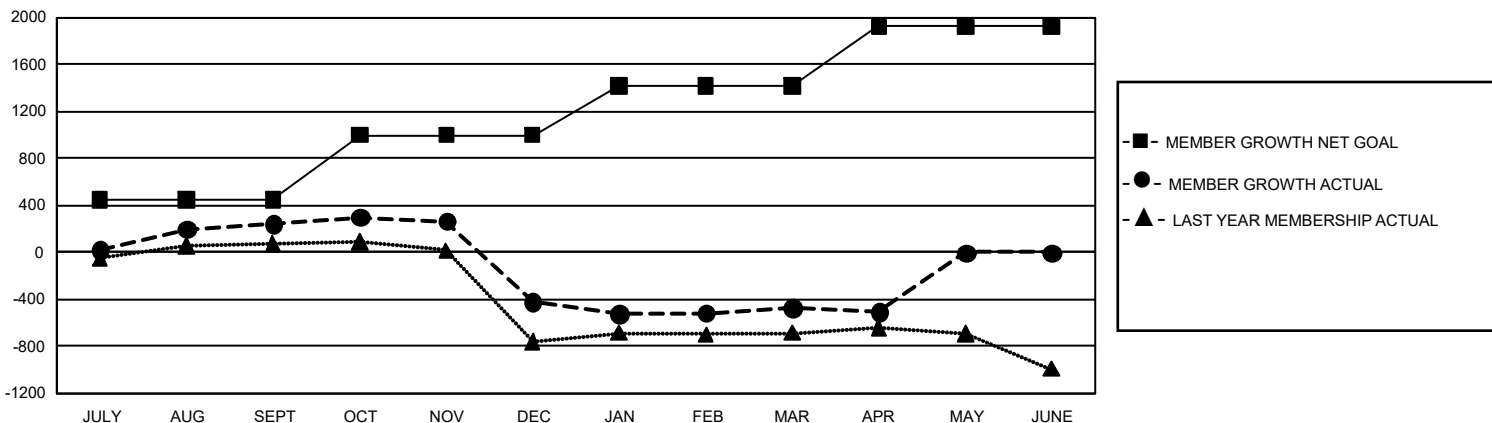
REPORT DOES NOT INCLUDE CLUBS IN UNDISTRICTED AREAS.

| Clubs | | | | Members | | | |
|-----------------------|---------------|-----------|---------------|-----------------------|------------------------|----------------------|--|
| RESULTS FOR 2019-2020 | | | | RESULTS FOR 2019-2020 | | | |
| QUARTER | NEW CLUB GOAL | NEW CLUBS | DROPPED CLUBS | QUARTER | MEMBER GROWTH NET GOAL | MEMBER GROWTH ACTUAL | DROPPED MEMBERS ACTUAL (including transfers) |
| JULY/AUG/SEPT | 36 | 8 | 3 | JULY/AUG/SEPT | 1,350 | 686 | 395 |
| OCT/NOV/DEC | 42 | 2 | 14 | OCT/NOV/DEC | 1,650 | 392 | 1,024 |
| JAN/FEB/MAR | 39 | 4 | 9 | JAN/FEB/MAR | 1,260 | 382 | 334 |
| APR/MAY/JUNE | 21 | 1 | 2 | APR/MAY/JUNE | 1,515 | 58 | 92 |

GOALS AND ACTUAL NEW CLUBS CUMULATIVE



GOALS AND ACTUAL MEMBERS CUMULATIVE



DROPPED CLUBS: 28

278 CLUBS OF 651 ADDED 1 OR MORE NEW MEMBERS

GENDER DISTRIBUTION

MALE 6,099 (44.56%)
 FEMALE 7,587 (55.44%)

DROPPED MEMBERS

| | |
|----------------|--------------|
| DECEASED | 65 |
| CLUB CANCELLED | 290 |
| OTHER | 1,486 |
| TOTAL | 1,841 |

[CLICK HERE FOR CUMULATIVE MEMBERSHIP DATA](#)

| | |
|---------------------------------|-------|
| TOTAL FAMILY UNIT MEMBERS | 5,110 |
| FAMILY MEMBERS PAYING HALF DUES | 2,977 |